



Andrew Richardson
Realsafe Technologies Ltd



REALSAFE TECHNOLOGIES

Credentials

Develop, maintain & license life-saving technology worldwide.

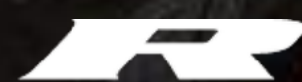
Specialists in automatic crash detection and emergency alerting technology.

Helped formulate the app accreditation scheme, becoming certified in 2016.

Three certified apps delivering direct connectivity to the Emergency Services.

Cloud-hosted emergency alerting infrastructure covering the UK, ROI, Europe, North America, Australia, New Zealand & Japan.

Trusted by motorcyclists and motorists with over 100 million miles protected to date.



REALSAFETECHNOLOGIES

Products & Services



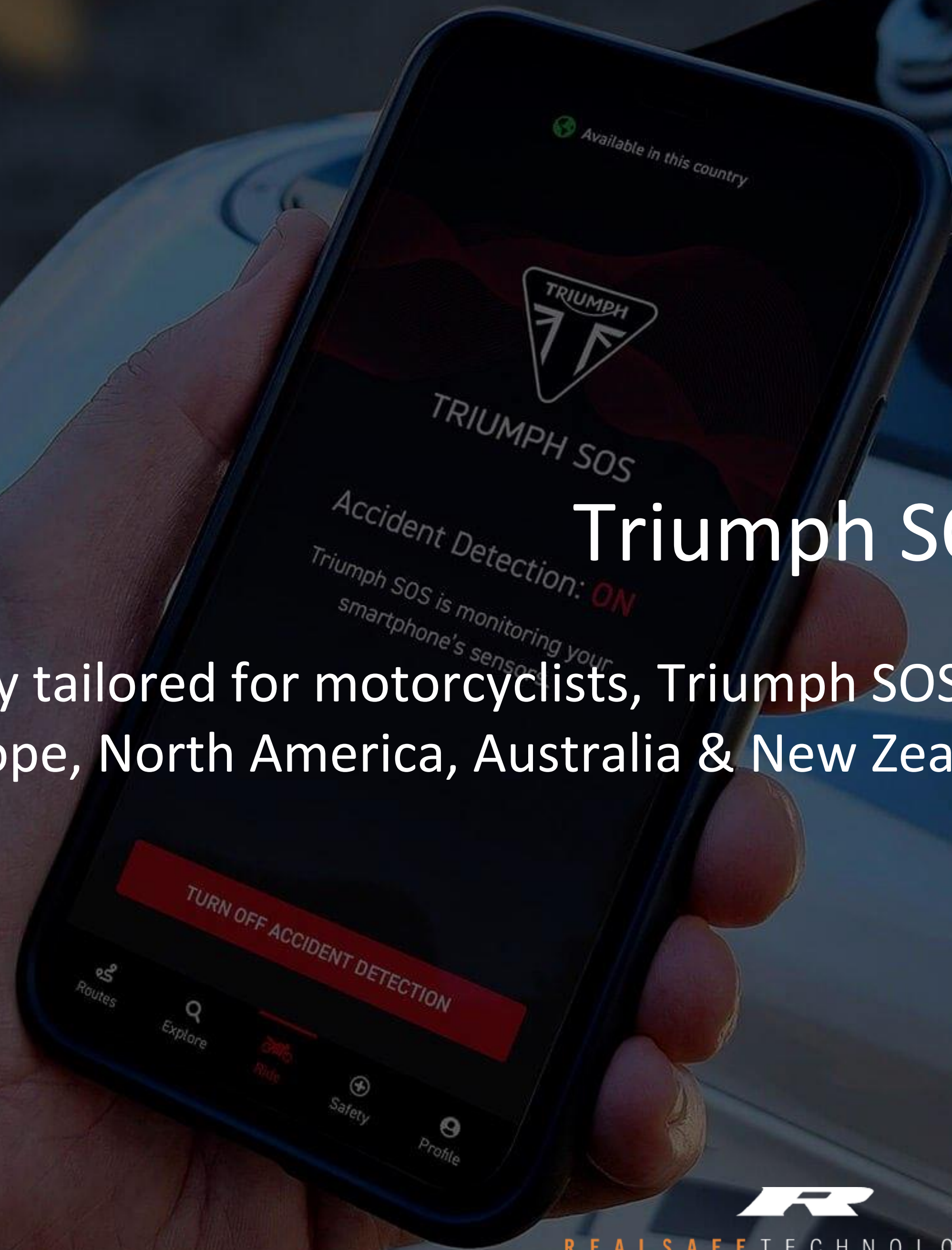
REALSAFETECHNOLOGIES

Dash Camera Emergency SOS

World's first dash camera with automatic crash detection & emergency alerting.
Emergency Service connectivity includes UK, ROI, Europe, North America, Australia, New Zealand & Japan.



REALSAFETECHNOLOGIES



Triumph SOS

Specifically tailored for motorcyclists, Triumph SOS protects motorcyclists across the UK, ROI, Europe, North America, Australia & New Zealand with automatic crash detection.



REALSAFETECHNOLOGIES

REALRIDER®

Automatically delivers your time-critical, location & potentially life-saving medical data to paramedics if you crash & can't call for help.



REALSAFETECHNOLOGIES



Crash Detected

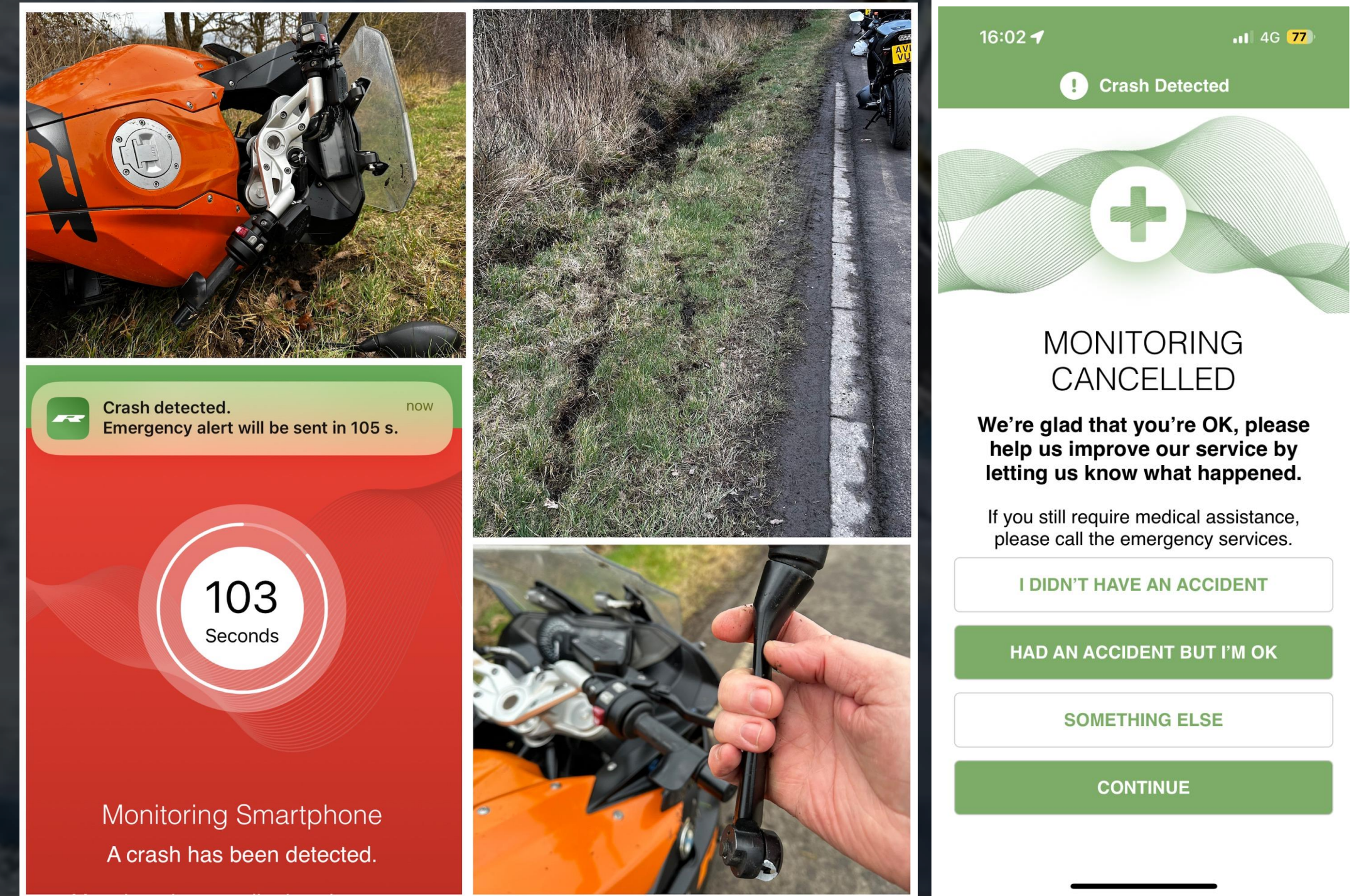
Crashed after 79,000 miles of incident-free riding.

Crash alert notifications received via Apple Watch, iPhone & Bluetooth headset.

Smartphone monitoring manually cancelled as uninjured. No need to send emergency data.

Both Apple Watch Series 8 & iPhone 14Pro didn't activate during crash.

Could we have helped Scottish motorcyclist Darrel Sturgeon?



1

2

3

4

5

6

7

CRASH DETECTED

REALSAFE EMERGENCY SERVICE INTEGRATION NETWORK

EMERGENCY SERVICE INTEGRATOR

THE CUSTOMER

PUBLIC SERVICE ANSWERING POINT

AMBULANCE DISPATCH

CUSTOMER LOCATION



App generates emergency data packet. Data is sent automatically to RESIN and includes:

- Customer Name
- Mobile/Medical Info
- Vehicle Make/Model/Colour
- Vehicle Fuel type
- GPS Location & accuracy
- Timestamp
- Direction of travel

Realsafe Emergency Service Integration Network. Responsible for delivering emergency data from the mobile app directly to Integrator.

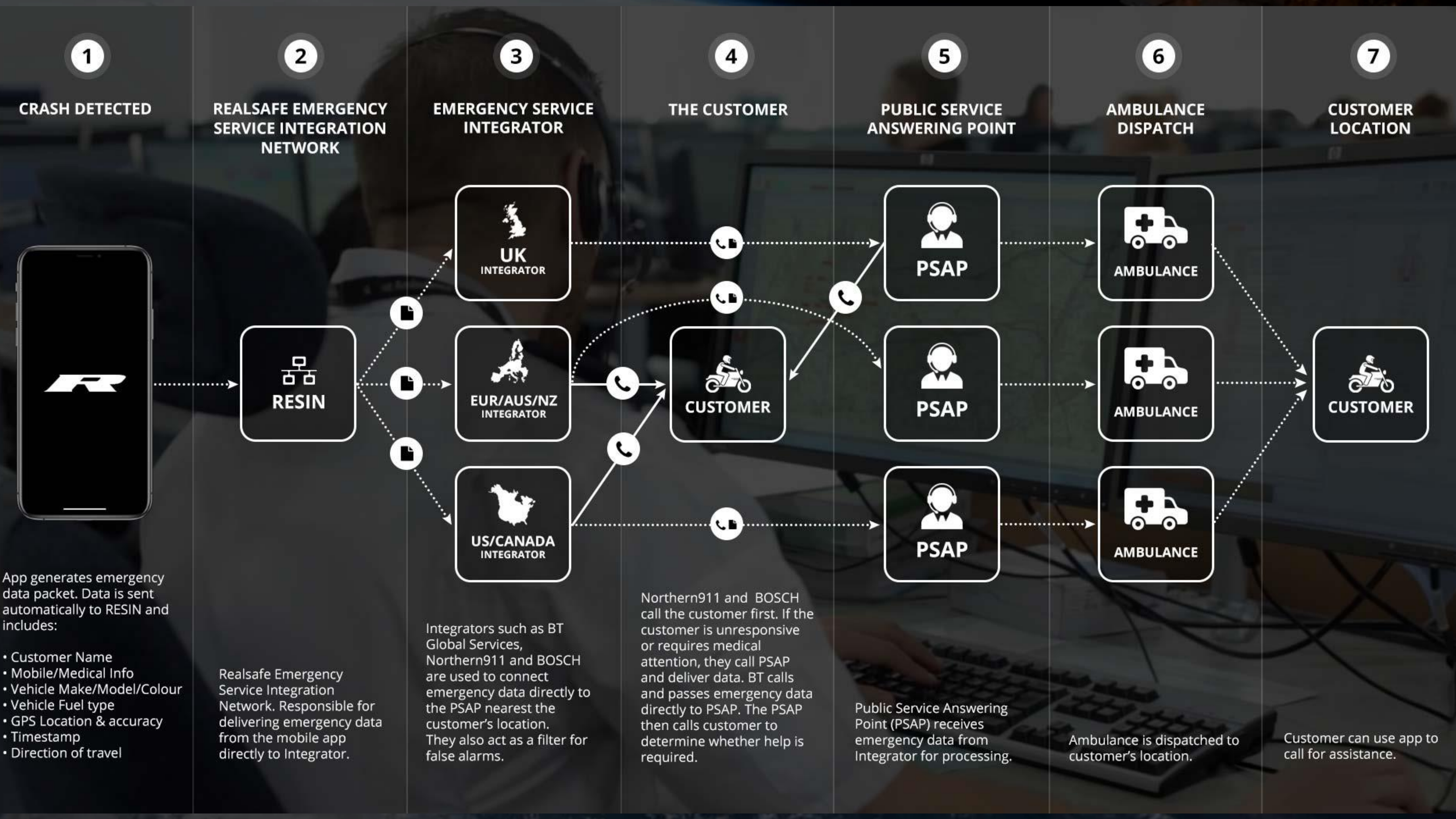
Integrators such as BT Global Services, Northern911 and BOSCH are used to connect emergency data directly to the PSAP nearest the customer's location. They also act as a filter for false alarms.

Northern911 and BOSCH call the customer first. If the customer is unresponsive or requires medical attention, they call PSAP and deliver data. BT calls and passes emergency data directly to PSAP. The PSAP then calls customer to determine whether help is required.

Public Service Answering Point (PSAP) receives emergency data from Integrator for processing.

Ambulance is dispatched to customer's location.

Customer can use app to call for assistance.



EISEC Integration

Emergency data sent following post-impact validation processes:

- Name & verified mobile.
- Direction of travel.

GPS location including confidence level & timestamp.

- Vehicle details (manufacturer, model, colour, fuel type).
- Medical information (saved on app within the device).



EISEC 2 Opportunities

EISEC 2 live and running in parallel to EISEC 1.

Built with greater flexibility for expanding data fields, adding URLs.

Extra info can be passed through to EAs but needs wide scale adoption.

Opens the opportunity to increase situational awareness by sending cloud-hosted video footage from crash scene.

RST will test URL/video capabilities with BT's via SIT environment.

What else could be sent - wearable data, location updates?





Geographical & Network Constraints



REALSAFE TECHNOLOGIES



-  Direct Emergency Integration
-  Satellite Connectivity - Global Rescue



REALSAFETECHNOLOGIES

Revolutionising Motorcycle Safety

Realsafe Technologies partners with ACR Bivy to alert the Emergency Services via the Iridium Satellite Network.



REALSAFE TECHNOLOGIES



REALRIDER®

Summary

EISEC 2 has the potential to deliver so much more emergency data.

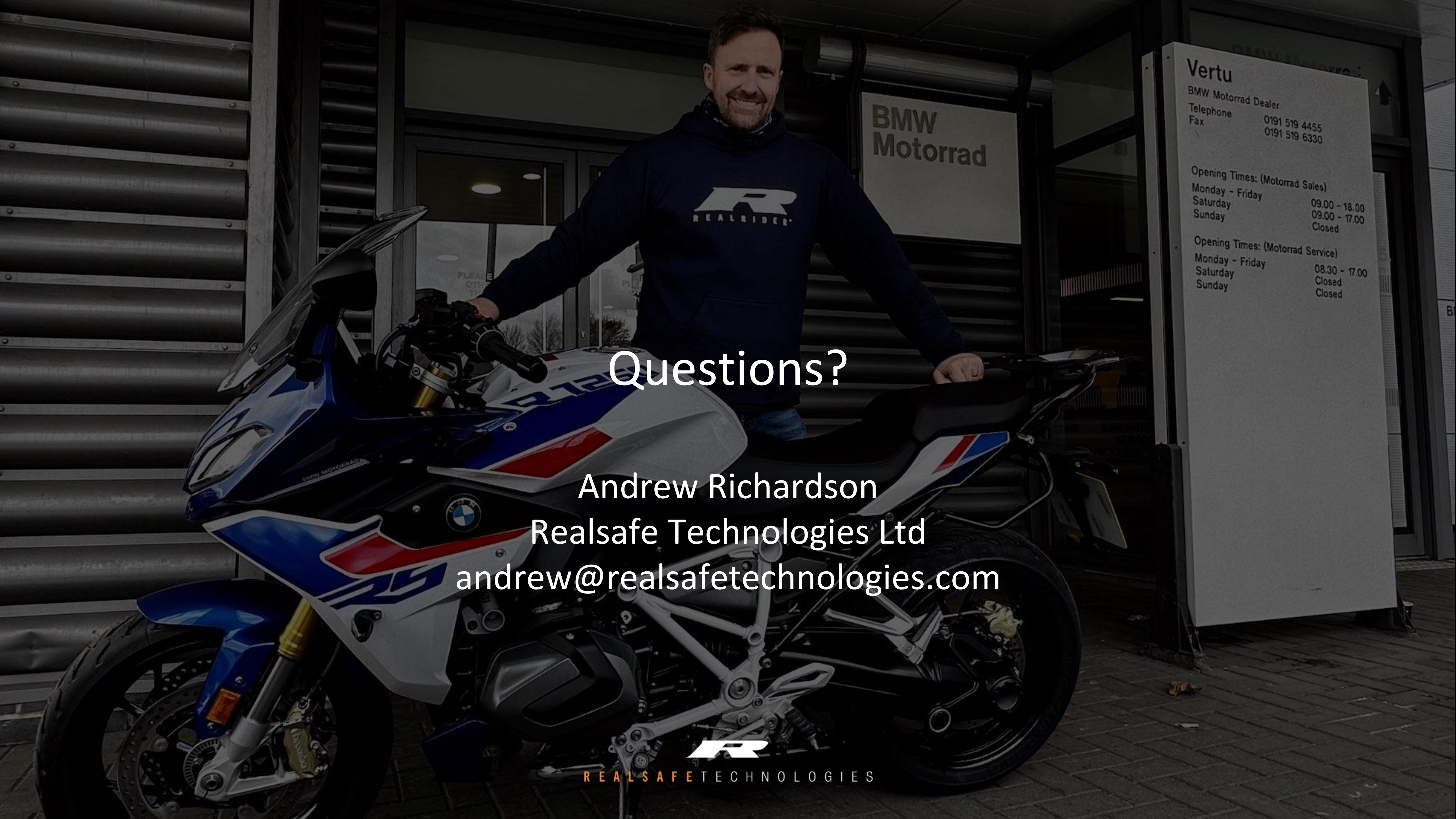
Live location updates, wearables data and video streaming could enhance situation awareness.

Satellite technology has the potential to save lives in remote parts of the world.

The collaboration with ACR Bivy is a game-changer for RST's emergency capabilities.



REALSAFETECHNOLOGIES



BMW
Motorrad

Vertu
BMW Motorrad Dealer
Telephone 0191 519 4455
Fax 0191 519 6330

Opening Times: (Motorrad Sales)
Monday - Friday 09.00 - 18.00
Saturday 09.00 - 17.00
Sunday Closed

Opening Times: (Motorrad Service)
Monday - Friday 08.30 - 17.00
Saturday Closed
Sunday Closed

Questions?

Andrew Richardson
Realsafe Technologies Ltd
andrew@realsafetechnologies.com



REALSAFE TECHNOLOGIES